

M-POINTER

Wireless Virtual Interactive Whiteboard

User's Manual



The content of this manual is subject to change without prior notice.
All rights reserved.

Table of Contents

Safety Instructions	3
Package Contents	4
Part Names and Function	5
Installation	
Software Installation.	6
Using the Software .	10
Calibration	10
Options	13
Functions	
Annotation	14
Whiteboard	18
Keyboard	20
Shortcut	21
PPT	22
Tools	23
Using the IR Pen	25
Setting Up	26
Changing RF Communications Channel	27
Troubleshooting	30
Specifications	31

Safety Instructions



Warning

- ✧ If smoke or strange odor arise, continued use could result in fire. In such case, immediately switch off the M-Pointer and if appropriate, disconnect the USB cable. After making sure that the smoke or odor has stopped, contact your dealer for repairs. Do not attempt to make repairs yourself.

Do not open the cabinet. There are no user serviceable parts inside. Should the unit become faulty, please contact your dealer.

Do not press the pen too hard onto the wall or screen

Cleaning Do not use abrasive chemical or solvents for cleaning. Use only soft cloth and mild cleaning products.

Do not place the M-Pointer on unstable surface. The accuracy of the calibration will be compromised if the M-Pointer moves after calibration.

Congratulations! You have now possessed one of the most sophisticated and environmental friendly presentation tools. It will assist you in your lecturing and interacting with your audience in a professional way.

To make sure you have a thorough understanding of the various functions of the M-Pointer, please go through this booklet in details. Please also keep it in a handy place for future reference when necessary.

Package Contents

Before you start, please check the package contents, if any are missing, please contact your dealer immediately.

- **IWB Main Unit**
 - **IR Pen**
 - **RF Dongle**
 - **USB cable**
 - **User's Instructions**
 - **Software disk**
-

Part Names and Function



(1) LED Indicator

Lights up when the M-Pointer is turned On.

(2) Rotating Camera Head

(3) USB Port

Used for charging the internal battery or for direct connection with PC

(4) Tripod Mount

Use with Tripod or with the Ceiling Mount Kit.

(5) Pen Tip

(6) USB Dongle

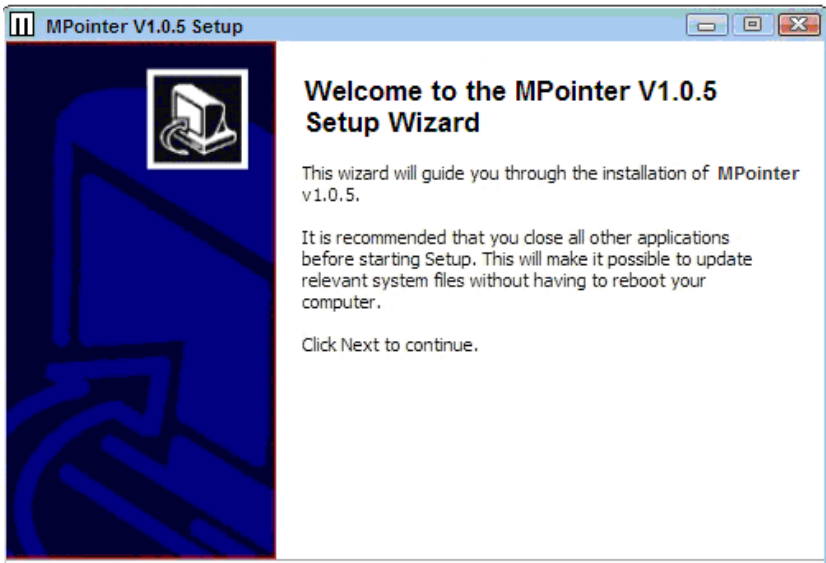
Use for Wireless Connection of M-Pointer with PC

Installation

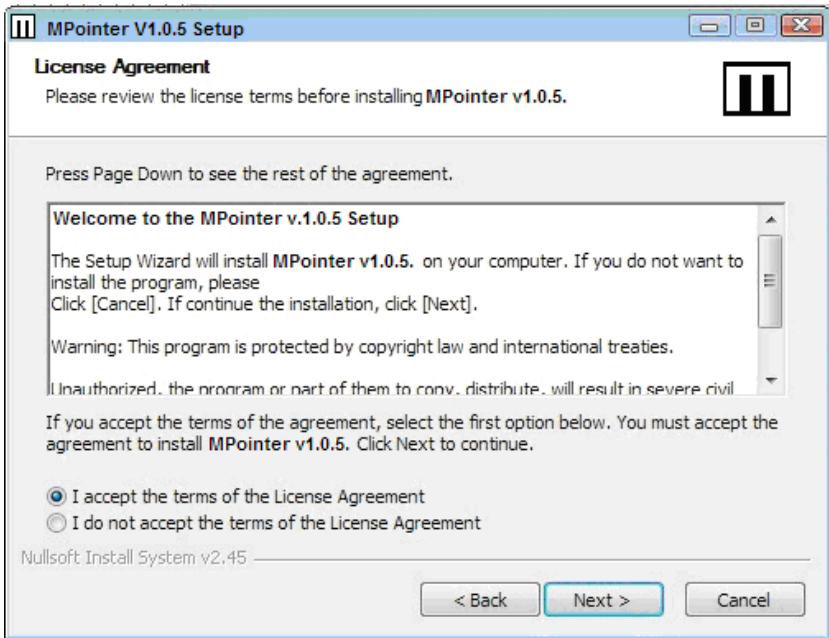
Software Installation

The M-Pointer Driver program is on the CD ROM. Turn on your PC and insert the CD into the CD ROM driver. Follow the instruction to install the program.

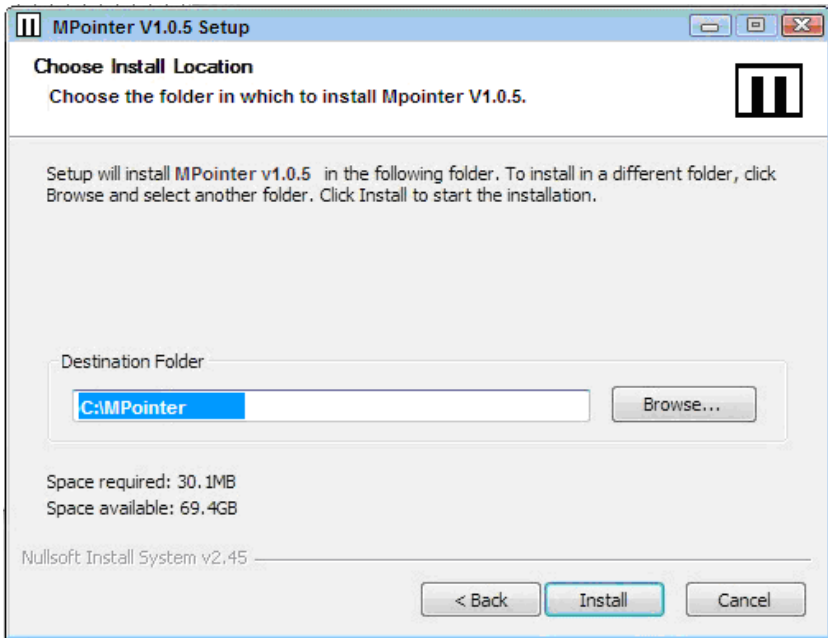
1. click “MPOINTER.EXE” to start the installation.



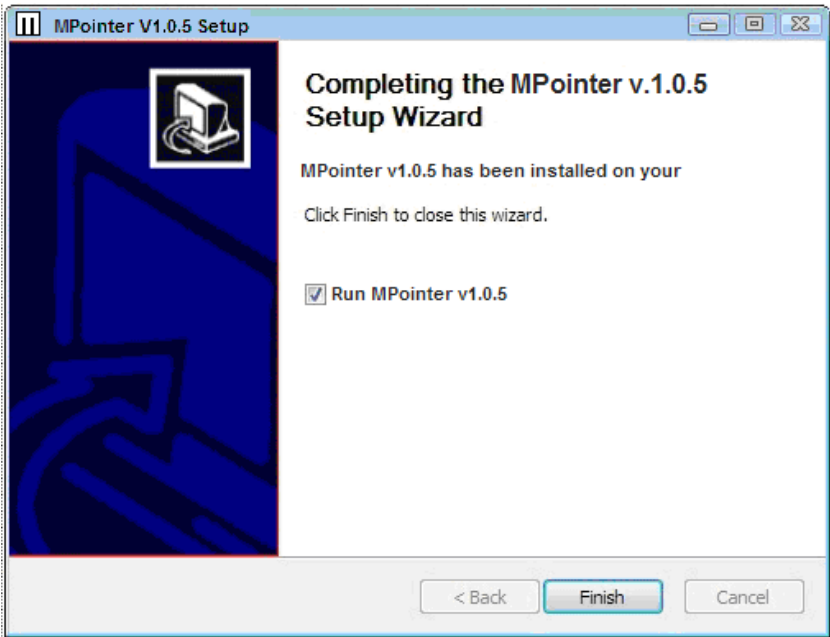
2. Accept the terms and conditions of the license agreement, then click NEXT



3. Set the location to install the MPOINTER software, then click INSTALL to start the installation.




4. Click FINISH to complete the installation.

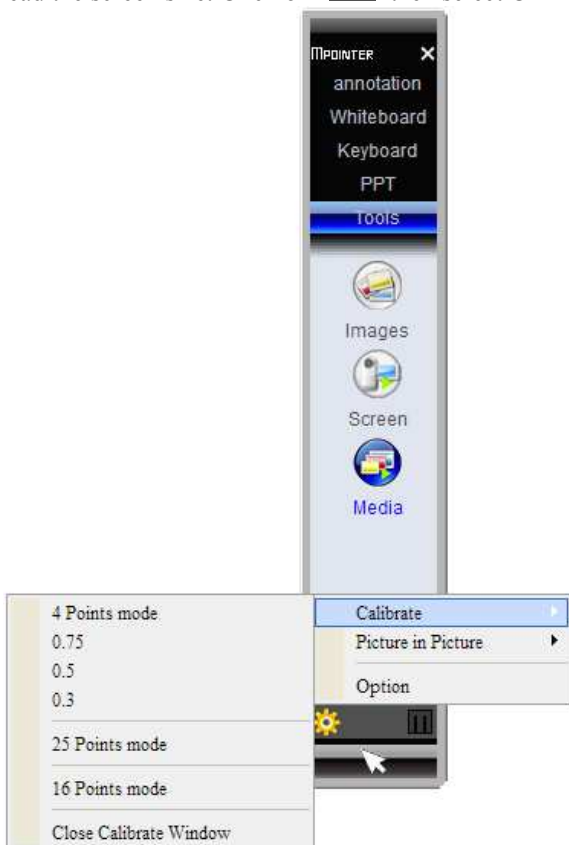


Using the Software

Connect the M-POINTER unit via the USB cable or insert the wireless USB dongle into the USB port of your PC. Start the MPOINTER application software. The icon will appear in the task bar on the bottom of the screen and the menu will display as follows :

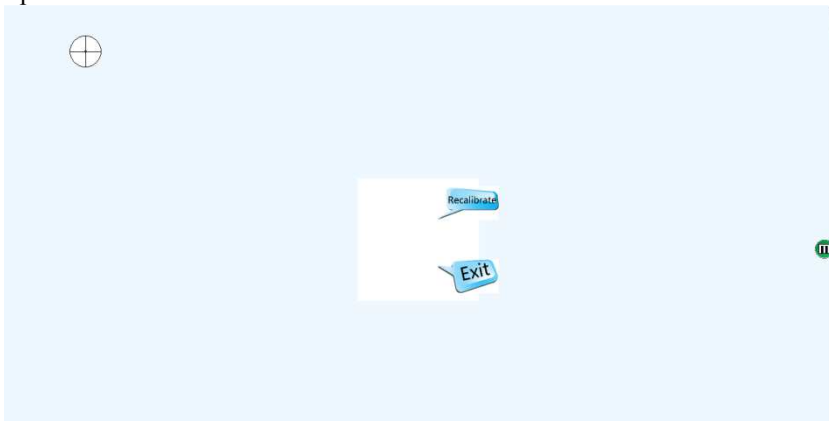


: Before using the functions of the M-Pointer the unit needs to be set to read the screen size. Click on  then select CALIBRATE.



Calibration

4 points mode : standard

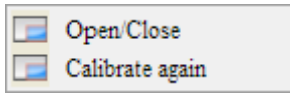


Touch the displayed crosshairs with the IR pen. If the device is able to detect the signal from the pen, the crosshairs will move to the next calibration point.

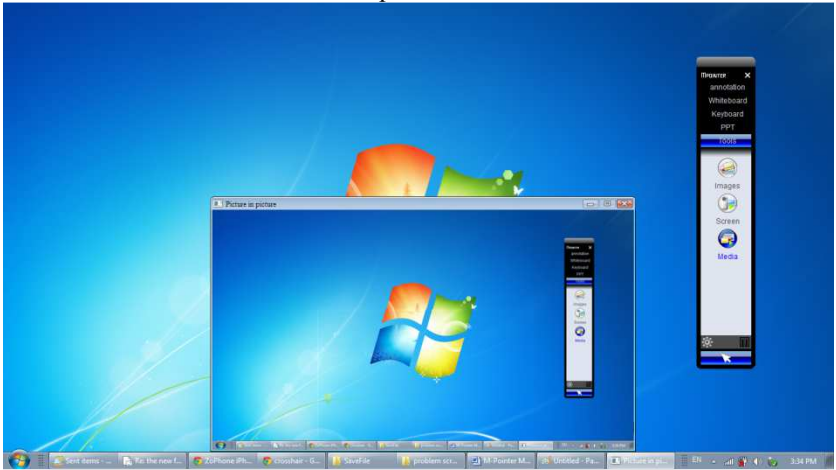
0.75, 0.5 and 0.3 modes : When the camera is not able to cover the whole screen, that is the top parts of the screen is out of reach, then use these modes. 0.75 mode, the crosshairs start to appear $\frac{3}{4}$ the way up the screen, 0.5 mode half way up and 0.3 mode $\frac{1}{3}$ the way up.

For greater accuracy, use the 25 and 16 point calibration modes.

Picture in Picture :

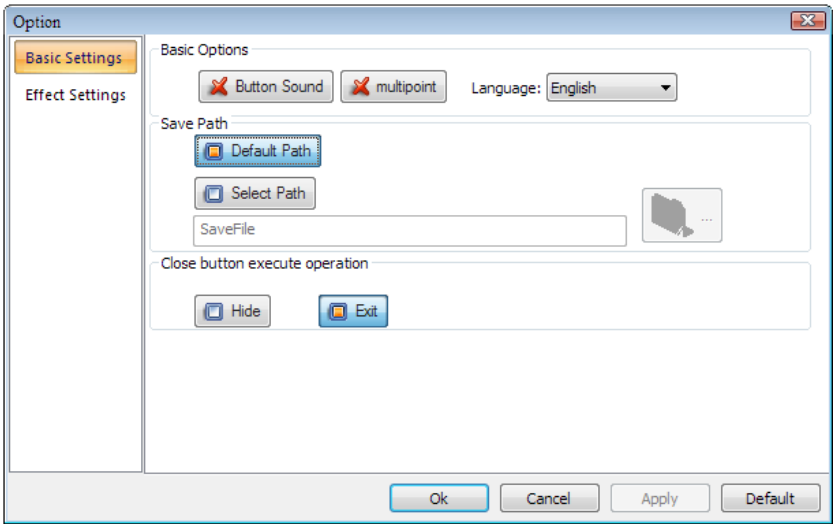


: When the PiP function is selected, a small window of the whole screen will appear, as in the following picture. Calibrate as in the main calibration procedure but for the small window.



This is particularly useful in situations when the entire screen is large and the top of the screen is out of reach.

OPTION : Basic settings for the M-Pointer. The options can be changed for personal preferences or left as they are.

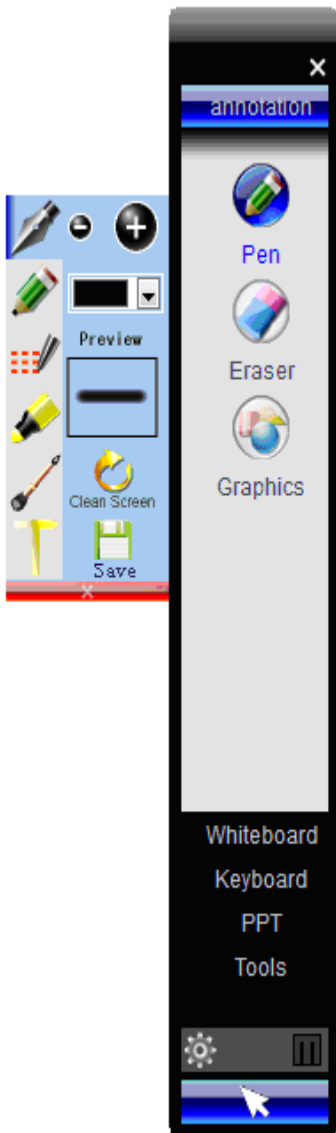


Functions

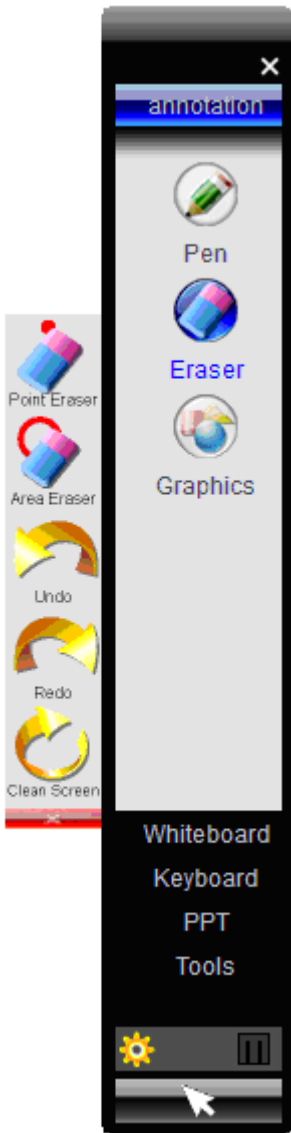
The following describes the functions of the M-Pointer software.








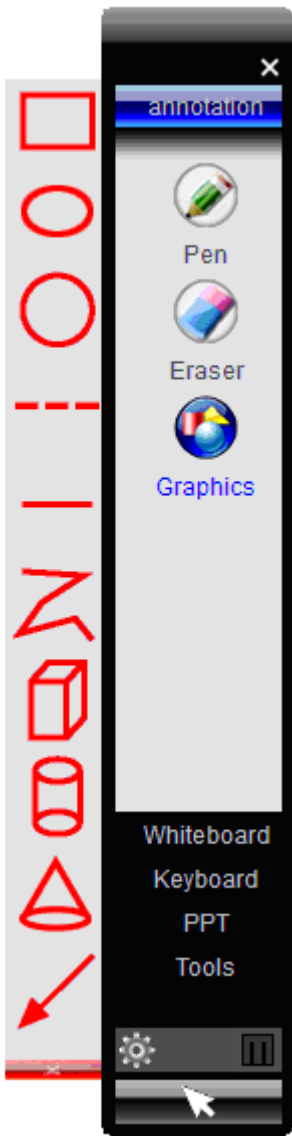
ANNOTATION
<p>PEN : A selection of different pen styles</p>
<p>ERASER : Selecting ways to delete annotations</p>



PEN	
	Fountain pen
	Pencil
	Highlighting pen
	Brush
	Dotted line style
	Clear all writings on the screen
	Input text by keyboard. Move cursor to location where you would like the text to be placed. Press and hold LEFT mouse button then move mouse to open required box size.
	To increase or reduce pen width or text size
	Selects pen or text color
	Previews pen thickness, color and text size



ERASE	
	erase at the cursor position
	Erase an enclosed area
	Cancels last operation
	Reverse the cancelled operation
	Clear all annotations



GRAPHICS

Use this function to draw various regular shapes on the screen



WHITEBOARD

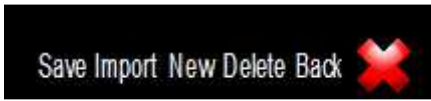
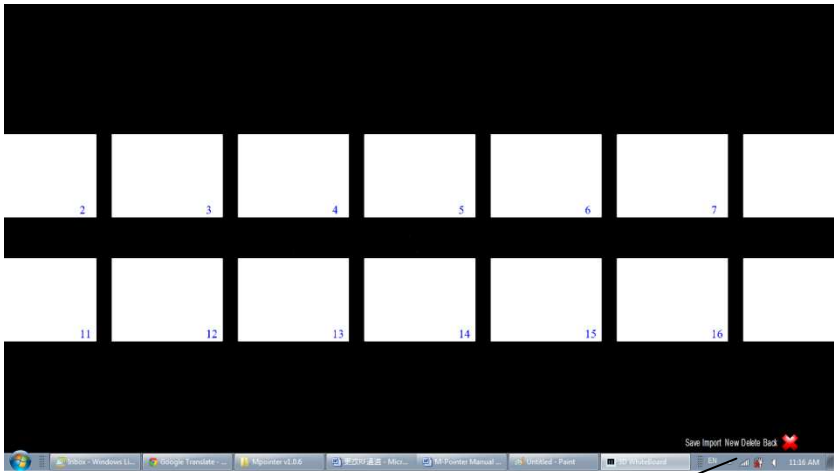
A blank screen to let you draw and write.

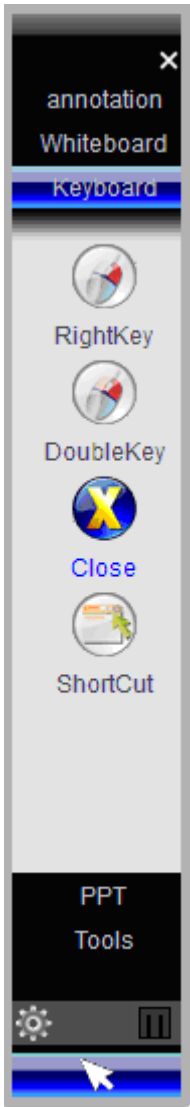
PEN, ERASER, GRAPHICS, functions exactly as in ANNOTATIONS.




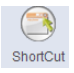
3DBOARD : Displays a set of 20 files (PNG files). Each numbered tile can be selected and displayed as the main tile on the screen. Can draw, write on each file and the whole set can be stored in the SAVEFILE folder. Prepared files can be imported to aid presentations.

Files are stored in the following format

SaveFile\yy-mm-dd-mi-zt\WhiteBoardTemp
(where yy is year, mm is month, dd is day, mi is minutes).



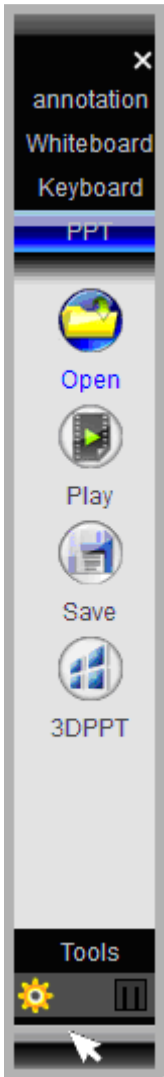


KEYBOARD	
	RightKey Sets the IR pen equivalent to operate as the RIGHT BUTTON of a mouse.
	DoubleKey Sets the IR pen equivalent to operate as the DOUBLE CLICK action of a mouse
	Close Closes opened applications
	ShortCut Provides options RESTORE, MINIMIZE, ESC and KEYBOARD. See Below





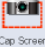


SHORT CUT

The options are equivalent to computer commands, minimizing, restoring and escape functions for applications windows. A soft keyboard to aid input.



PPT
<p>PPT : opens, plays and annotate PPT or WPS files.</p>
<p>SAVE : Option to save annotated active files to desired storage locations.</p>
<p>3DPPT : Same function as 3Dboard but instead displays the pages of the PPT as a series of PNG files which are stored in a PowerPoint folder</p>









TOOLS	
Capture and display images.	
Images	
	capture a selected area of the screen
	capture whole screen
	print selected image
	select and display previously stored images



SCREEN

Continue recording ✕

   00:00:09

-  stop recording screen activity
-  pause recording screen activity
-  playback captured video

Captured video is in AVI file format

MEDIA : Browse pictures with the 3D board.

Using the IR Pen

Unscrew the rear cap to open and insert two AAA size batteries into the compartment. Please note the correct polarity of the battery.

1. **Click**
Lightly tap the pen tip once on the menu or icon of the screen.
2. **Double Click**
Light tap the pen tip twice on the same place of the screen.
3. **Drag**
Lightly press the pen tip on an icon and move it, placing it on the screen within the active area.
4. **Writing and Drawing**
Use the pen like a normal pen.

Note: As the operation of the M-Pointer depends on identification of the IR dot as emitted by the pen by the camera on the main unit, it is essential that the human body or the hand or arm do not block the path between the camera and the pen tip.


Setting Up

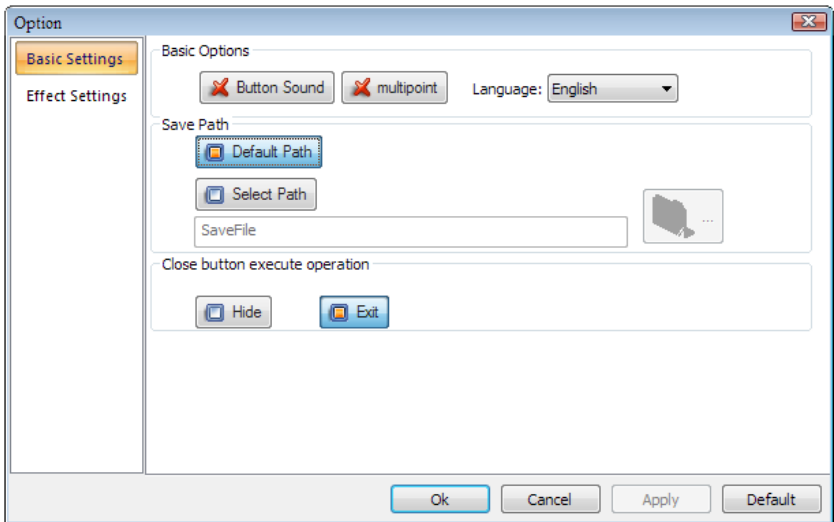
1. Place the M-Pointer at a distance to the screen of about the width of the projected image. The M-Pointer works fine over a wide range of positions.
2. Plug the Wireless Dongle onto a USB 2.0 port on your PC for wireless operation or connect the port on the rear of the Main Unit to the USB port on your PC.
3. Turn the camera head up by rotating outwards. There is a magnetic switch inside the M-Pointer. The unit will turn On immediately when the camera is rotated outwards. Please place the camera head back to its closed position to turn Off the unit. This will save the battery operating time.
4. Rotate the camera head to a position so that the center of the camera is approximately in line with the center of the screen. This does not require very precise setting.
5. Click on the M-Pointer Driver to start the software.

Note: Please charge up the battery after the box is opened by connecting the M-Pointer to the USB port of your PC.

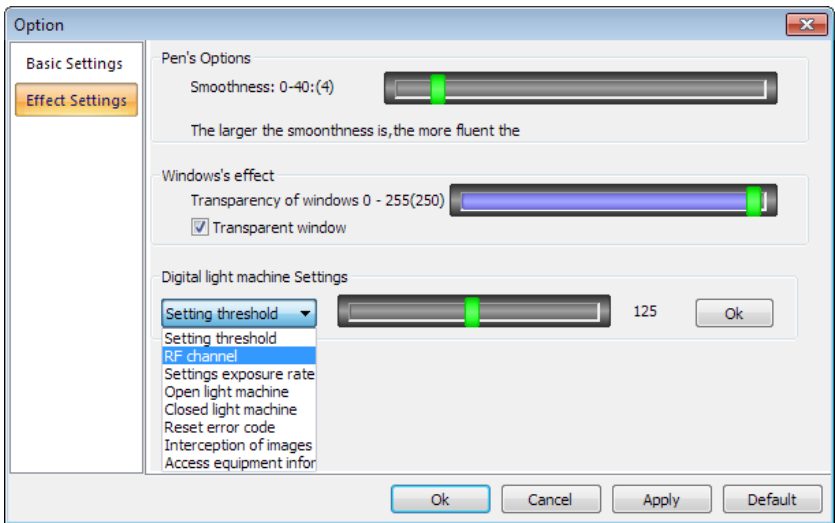
Changing RF communications channel

Set MAIN UNIT

- check that both the main unit and RF dongle is powered OFF
- connect the USB cable from the main unit to a computer
- invoke the MPointer software
- click on  then click on EFFECT SETTINGS




- on the computer keyboard press 'Ctrl' and 'F' simultaneously to give obtain the following screen

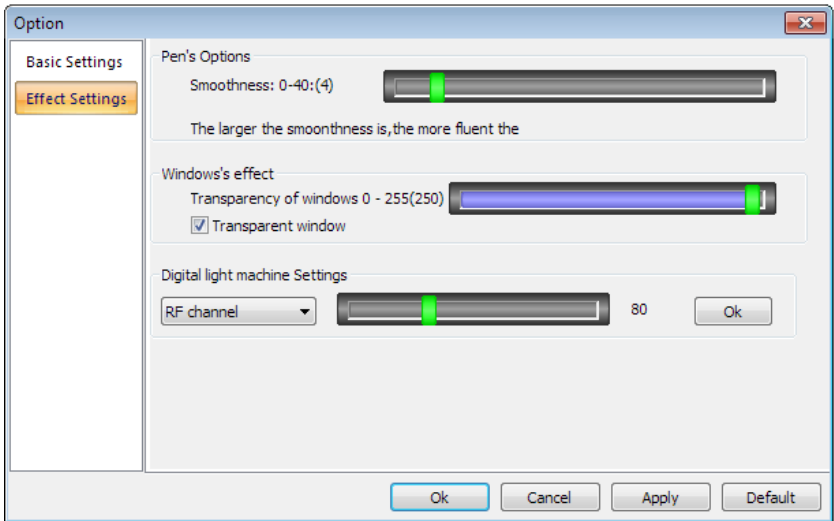


Select an unused channel (channel 80 is factory default), for example channel 100.

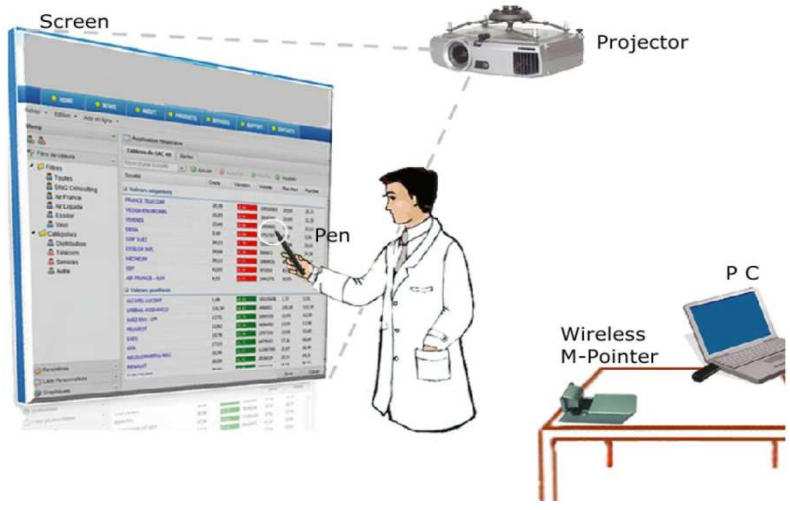
- slide the vertical bar to the right until 100 is displayed, then to the right of the RF channel bar click on OK
- Click on the OK at the bottom of the settings screen to finish
- Close the MPointer software and disconnect the main unit from the computer

Set RF DONGLE

- plug the RF dongle to an unused USB port on the computer
- invoke the MPointer software
- click on  then click on EFFECT SETTINGS
- on the computer keyboard press 'Ctrl' and 'F' simultaneously to give obtain the following screen
- Click on SETTING THRESHOLD pull down options, then click RF CHANNEL



- slide the green bar to channel 100 (same channel as the main unit), then on the right click on OK
- Click on the OK at the bottom of the settings screen to finish
- Close the MPointer software then remove dongle from computer to finish



Installation Diagram

TROUBLESHOOTING

Problem	Reason and Solution
LED on the camera does not light up	Rechargeable battery runs low. Recharge battery using the supplied USB cable
Mouse cursor not accurate after calibration	The M-Pointer might have moved during installation. Recalibrate. Please do not change the resolution on your computer AFTER the driver software is opened
Cursor moves about randomly	Point the unit away from bright natural light and areas of high IR emission.
Two or more wireless IWB units operate at the same time	Set one of the wireless units to operate on different RF channel (see setting RF channels)

SPECIFICATIONS

Operating System	Windows XP, Vista, Windows 7	
PC Requirement	Better than Pentium 4, 1.0 G, 512 M RAM and 2G Harddisk space	
Scan Rate	67 frames/second	
Resolution(pixels)	300,000 Native, 1.2M expanded	
Calibration Method	4/16/25 points selectable	
Interface	USB 2.0	
Accuracy	Less than 1.5 pixels	
Uniformity	>85%	
Operating Distance	Standard Throw	Short Throw
Wireless Distance	8 m open space	
Battery Operating Time	More than 8 hours	
Power Consumption	Approx.	
Dimension (WxLxH)	60x130x30mm	
Weight	173g (inclusive of IR pen and rf dongle)	

